



CDC-R507M YZ

SERVICE MANUAL

STEREO CAR CD RECEIVER

BASIC CD MECHANISM : AZA-2 MCHNF

- Replace this Service manual with "Revision Publishing" when it is issued.

aiwa

S/M Code No. 09-003-431-3T1

SIMPLE

DATA

ELECTRICAL MAIN PARTS LIST - 1 / 4

NOTE: The characters in the suffix column indicate the part usage.

REF.NO	PARTS NO.	DESCRIPTION	SUFFIX	
MYZSTFXX	A.....	
		KANRI		
		NO.		
C	907	87-010-178-080	CHIP CAP 1000P	A.....
C	908	87-010-178-080	CHIP CAP 1000P	A.....
C	906	87-010-196-080	CHIP CAPACITOR,0.1-25	A.....
C	903	87-010-196-080	CHIP CAPACITOR,0.1-25	A.....
C	909	87-010-198-080	CAP, CHIP 0.022	A.....
C	905	87-010-314-080	C-CAP,S 22P-50V	A.....
C	904	87-010-315-080	C-CAP,S 27P-50 CH	A.....
C	902	87-012-358-080	C-CAP,S 0.47-10 F Z	A.....
C	901	87-016-039-090	CAP,DL 0.022F-5.5 Z 70 FM	A.....
C	912	87-010-198-080	CAP, CHIP 0.022	A.....
C	916	87-010-198-080	CAP, CHIP 0.022	A.....
C	914	87-010-198-080	CAP, CHIP 0.022	A.....
C	913	87-010-198-080	CAP, CHIP 0.022	A.....
C	910	87-010-322-080	C-CAP,S 100P-50 CH	A.....
C	911	87-010-322-080	C-CAP,S 100P-50 CH	A.....
D	905	87-020-331-080	CHIP-DIODE,DAN202K	A.....
D	904	87-020-331-080	CHIP-DIODE,DAN202K	A.....
D	907	87-020-331-080	CHIP-DIODE,DAN202K	A.....
D	909	87-027-262-010	LEDE,TLR-124 (RED)	A.....
IC	903	87-020-784-080	IC,TC4053BF	A.....
IC	901	87-A21-528-030	C-IC,UPD178018A-XXX	A.....
S	901	87-A91-070-010	SW,TACT SKHHLV	A.....
X	901	87-A70-175-010	VIB,XTAL 4.5MHZ AT-49	A.....
ANT	101	8Z-KT1-614-010	ANT,AW-002	A.....
C	101	87-010-178-080	CHIP CAP 1000P	A.....
C	104	87-010-186-080	CAP,CHIP 4700P	A.....
C	102	87-010-197-080	CAP, CHIP 0.01 DM	A.....
C	109	87-010-197-080	CAP, CHIP 0.01 DM	A.....
C	107	87-010-198-080	CAP, CHIP 0.022	A.....
C	106	87-010-198-080	CAP, CHIP 0.022	A.....
C	103	87-010-322-080	C-CAP,S 100P-50 CH	A.....
C	105	87-010-490-040	CAP, ELECT 0.1-50	A.....
C	108	87-018-131-080	CAP, CER 1000P-50V	A.....
C	111	87-010-196-080	CHIP CAPACITOR,0.1-25	A.....
C	116	87-010-197-080	CAP, CHIP 0.01 DM	A.....
C	118	87-010-197-080	CAP, CHIP 0.01 DM	A.....
C	113	87-010-197-080	CAP, CHIP 0.01 DM	A.....
C	117	87-010-197-080	CAP, CHIP 0.01 DM	A.....
C	112	87-010-197-080	CAP, CHIP 0.01 DM	A.....
C	119	87-010-495-040	CAP,E 2.2-50 GAS	A.....
C	120	87-010-185-080	C-CAP,S 3900P-50 B	A.....
C	124	87-012-358-080	C-CAP,S 0.47-10 F Z	A.....
C	123	87-012-358-080	C-CAP,S 0.47-10 F Z	A.....
C	122	87-012-365-080	C-CAP,S 0.027-25VBK	A.....
C	121	87-012-365-080	C-CAP,S 0.027-25VBK	A.....
D	101	87-A40-250-080	C-DIODE,DAN217	A.....
L	107	87-003-143-080	COIL 4.7 UH	A.....
L	102	8Z-KT1-619-010	COIL,68MH K7-D	A.....
Q	104	87-A30-287-040	C-TR,DTC114TKA	A.....
Q	101	87-A30-287-040	C-TR,DTC114TKA	A.....
Q	102	87-A30-289-040	C-TR,2SA1037AK(R)	A.....
Q	106	89-324-122-080	TR,2SC2412K	A.....
Q	109	89-324-122-080	TR,2SC2412K	A.....
Q	105	89-324-122-080	TR,2SC2412K	A.....
Q	108	89-324-122-080	TR,2SC2412K	A.....
Q	103	89-324-122-080	TR,2SC2412K	A.....
SFR	101	87-024-437-080	SFR100K,RH063EC	A.....
TU	101	8A-KC8-620-010	TU UNIT, FAE347-A11	A.....
C	155	87-010-175-080	CAP 560P	A.....
C	156	87-010-196-080	CHIP CAPACITOR,0.1-25	A.....
C	152	87-010-315-080	C-CAP,S 27P-50 CH	A.....
C	153	87-010-495-040	CAP,E 2.2-50 GAS	A.....
C	157	87-010-553-040	CAP,E 47-16 GAS	A.....
C	151	87-012-149-080	C-CAP,S 30P-50 CH	A.....
C	154	87-012-157-080	C-CAP,S 330P-50 CH	A.....
D	151	87-070-136-080	ZENER,MTZJ5.1B	A.....
IC	151	88-KT1-607-080	C-IC,SAA6579T	A.....
L	151	87-003-147-080	COIL, 22UH	A.....
X	151	87-A70-091-010	VIB,XTAL 4.332MHZ CSA-309	A.....
C	305	87-010-184-080	CHIP CAPACITOR 3300P(K)	A.....
C	306	87-010-184-080	CHIP CAPACITOR 3300P(K)	A.....
C	308	87-010-198-080	CAP, CHIP 0.022	A.....
C	307	87-010-198-080	CAP, CHIP 0.022	A.....
C	304	87-010-805-080	CAP, S 1-16	A.....
C	303	87-010-805-080	CAP, S 1-16	A.....
C	309	87-012-358-080	C-CAP,S 0.47-10 F Z	A.....
C	301	87-012-358-080	C-CAP,S 0.47-10 F Z	A.....
C	302	87-012-358-080	C-CAP,S 0.47-10 F Z	A.....
C	317	87-010-196-080	CHIP CAPACITOR,0.1-25	A.....
C	318	87-010-498-040	CAP,E 10-16 GAS	A.....
C	310	87-012-358-080	C-CAP,S 0.47-10 F Z	A.....

ELECTRICAL MAIN PARTS LIST - 2 / 4

C	315	87-012-358-080	C-CAP,S 0.47-10 F Z	A.....
C	316	87-012-358-080	C-CAP,S 0.47-10 F Z	A.....
C	313	87-A11-177-080	C-CAP,S 0.15-16 K B	A.....
C	314	87-A11-177-080	C-CAP,S 0.15-16 K B	A.....
C	312	87-A11-177-080	C-CAP,S 0.15-16 K B	A.....
C	311	87-A11-177-080	C-CAP,S 0.15-16 K B	A.....
C	322	87-010-198-080	CAP, CHIP 0.022	A.....
C	321	87-010-555-040	CAP,E 100-10 GAS	A.....
C	336	87-010-491-040	CAP,E 0.22-50 GAS	A.....
C	335	87-010-491-040	CAP,E 0.22-50 GAS	A.....
C	334	87-010-498-040	CAP,E 10-16 GAS	A.....
C	333	87-010-498-040	CAP,E 10-16 GAS	A.....
C	332	87-010-498-040	CAP,E 10-16 GAS	A.....
C	331	87-010-498-040	CAP,E 10-16 GAS	A.....
C	338	87-010-805-080	CAP, S 1-16	A.....
C	337	87-010-805-080	CAP, S 1-16	A.....
C	339	87-010-805-080	CAP, S 1-16	A.....
C	340	87-010-805-080	CAP, S 1-16	A.....
C	343	87-012-140-080	CAP 470P	A.....
C	342	87-012-140-080	CAP 470P	A.....
C	341	87-012-140-080	CAP 470P	A.....
C	344	87-012-140-080	CAP 470P	A.....
IC	301	8Z-KT1-622-010	C-IC,LC75374E	A.....
J	401	87-A61-225-010	JACK,PIN 2P XR-401	A.....
L	301	87-003-102-080	COIL, 10UH	A.....
Q	301	87-A30-287-040	C-TR,DTC114TKA	A.....
Q	302	87-A30-287-040	C-TR,DTC114TKA	A.....
Q	303	87-A30-287-040	C-TR,DTC114TKA	A.....
Q	304	87-A30-287-040	C-TR,DTC114TKA	A.....
Q	405	87-A30-287-040	C-TR,DTC114TKA	A.....
Q	406	87-A30-287-040	C-TR,DTC114TKA	A.....
C	506	87-010-178-080	CHIP CAP 1000P	A.....
C	507	87-010-178-080	CHIP CAP 1000P	A.....
C	508	87-010-178-080	CHIP CAP 1000P	A.....
C	505	87-010-178-080	CHIP CAP 1000P	A.....
C	509	87-010-805-080	CAP, S 1-16	A.....
C	502	87-012-358-080	C-CAP,S 0.47-10 F Z	A.....
C	504	87-012-358-080	C-CAP,S 0.47-10 F Z	A.....
C	503	87-012-358-080	C-CAP,S 0.47-10 F Z	A.....
C	501	87-012-358-080	C-CAP,S 0.47-10 F Z	A.....
C	514	87-010-322-080	C-CAP,S 100P-50 CH	A.....
C	516	87-010-322-080	C-CAP,S 100P-50 CH	A.....
C	511	87-010-322-080	C-CAP,S 100P-50 CH	A.....
C	517	87-010-322-080	C-CAP,S 100P-50 CH	A.....
C	513	87-010-322-080	C-CAP,S 100P-50 CH	A.....
C	518	87-010-322-080	C-CAP,S 100P-50 CH	A.....
C	515	87-010-322-080	C-CAP,S 100P-50 CH	A.....
C	512	87-010-322-080	C-CAP,S 100P-50 CH	A.....
C	519	87-010-494-040	CAP,E 1-50 GAS	A.....
C	510	87-010-498-040	CAP,E 10-16 GAS	A.....
D	505	87-001-783-080	DIODE,1N4002	A.....
D	506	87-001-783-080	DIODE,1N4002	A.....
D	507	87-001-783-080	DIODE,1N4002	A.....
D	503	87-001-783-080	DIODE,1N4002	A.....
D	508	87-001-783-080	DIODE,1N4002	A.....
D	501	87-001-783-080	DIODE,1N4002	A.....
D	504	87-001-783-080	DIODE,1N4002	A.....
D	502	87-001-783-080	DIODE,1N4002	A.....
IC	501	87-A21-562-010	IC,LA4743B	A.....
C	209	87-010-196-080	CHIP CAPACITOR,0.1-25	A.....
C	208	87-010-196-080	CHIP CAPACITOR,0.1-25	A.....
C	207	87-010-196-080	CHIP CAPACITOR,0.1-25	A.....
C	206	87-010-198-080	CAP, CHIP 0.022	A.....
C	205	87-010-553-040	CAP,E 47-16 GAS	A.....
C	202	87-012-358-080	C-CAP,S 0.47-10 F Z	A.....
C	219	87-010-182-080	C-CAP,S 2200P-50 B	A.....
C	217	87-010-196-080	CHIP CAPACITOR,0.1-25	A.....
C	213	87-010-196-080	CHIP CAPACITOR,0.1-25	A.....
C	214	87-010-196-080	CHIP CAPACITOR,0.1-25	A.....
C	218	87-010-196-080	CHIP CAPACITOR,0.1-25	A.....
C	212	87-010-196-080	CHIP CAPACITOR,0.1-25	A.....
C	211	87-010-198-080	CAP, CHIP 0.022	A.....
C	216	87-010-198-080	CAP, CHIP 0.022	A.....
C	252	87-010-182-080	C-CAP,S 2200P-50 B	A.....
C	251	87-010-196-080	CHIP CAPACITOR,0.1-25	A.....
C	801	8A-KC7-623-000	CAP,E 2200U-16 BT(125C)	A.....
D	209	87-017-932-080	ZENER,MTJ6.2B	A.....
D	206	87-020-330-080	DIODE,DAP202K	A.....
D	207	87-A40-002-080	ZENER,MTZJ5.1C	A.....
D	205	87-A40-509-080	ZENER,MTZJ6.8C	A.....
D	204	87-A40-523-080	ZENER,MTZJ9.1B	A.....
D	201	87-A40-649-080	ZENER,MTZJ11A	A.....
D	208	87-A40-650-080	ZENER,MTZJ6.8A	A.....
D	212	87-070-136-080	ZENER,MTZJ5.1B	A.....
D	255	87-070-136-080	ZENER,MTZJ5.1B	A.....
D	251	87-A40-798-010	DIODE,1N5402 (3A/200V)	A.....
F	251	8Z-KC1-621-010	FUSE,15A 32V	A.....

ELECTRICAL MAIN PARTS LIST - 3/4

IC	201	88-KT1-606-080	IC, PST994D	A
L	202	87-003-102-080	COIL, 10UH	A
L	201	87-003-102-080	COIL, 10UH	A
L	251	8Z-KT1-615-010	FLTR, AMORPHOUS -CHOKE	A
Q	208	87-A30-287-040	C-TR, DTC114TKA	A
Q	204	87-A30-287-040	C-TR, DTC114TKA	A
Q	207	87-A30-289-040	C-TR, 2SA1037AK (R)	A
Q	205	87-A30-290-010	TR, KTA1658 (Y)	A
Q	201	87-A30-290-010	TR, KTA1658 (Y)	A
Q	206	87-A30-291-010	TR, KTC4369 (Y)	A
Q	203	89-324-122-080	TR, 2SC2412K	A
Q	202	89-324-122-080	TR, 2SC2412K	A
Q	209	89-418-580-080	TR, 2SD1858 TV2	A
Q	211	87-A30-287-040	C-TR, DTC114TKA	A
Q	210	87-A30-287-040	C-TR, DTC114TKA	A
Q	213	89-423-953-010	TR, 2SD2395F	A
		8A-KT1-631-010	CONN ASSY, 8P ISO-BLACK-A	A
		8A-KT1-632-010	CONN ASSY, 8P ISO-WHITE-A	A
C	406	87-010-196-080	CHIP CAPACITOR, 0.1-25	A
C	405	87-010-196-080	CHIP CAPACITOR, 0.1-25	A
C	404	87-010-198-080	CAP, CHIP 0.022	A
C	407	87-012-358-080	C-CAP, S 0.47-10 F Z	A
C	408	87-012-358-080	C-CAP, S 0.47-10 F Z	A
C	403	87-012-358-080	C-CAP, S 0.47-10 F Z	A
C	402	87-012-358-080	C-CAP, S 0.47-10 F Z	A
C	409	87-012-358-080	C-CAP, S 0.47-10 F Z	A
C	410	87-012-358-080	C-CAP, S 0.47-10 F Z	A
CON	401	87-A61-219-010	CONN, 20P H 52089-2020	A
CON	402	88-KTA-603-010	CONN, 15P CAM-B68	A
D	408	87-A40-337-080	ZENER, MTZJ 6.8B	A
D	405	87-A40-337-080	ZENER, MTZJ 6.8B	A
D	407	87-A40-337-080	ZENER, MTZJ 6.8B	A
D	409	87-A40-337-080	ZENER, MTZJ 6.8B	A
D	406	87-A40-337-080	ZENER, MTZJ 6.8B	A
D	402	87-A40-817-040	C-ZENER, STZ6.8N	A
D	404	87-A40-817-040	C-ZENER, STZ6.8N	A
D	403	87-A40-817-040	C-ZENER, STZ6.8N	A
D	411	87-A40-337-080	ZENER, MTZJ 6.8B	A
D	410	87-A40-337-080	ZENER, MTZJ 6.8B	A
D	412	87-A40-337-080	ZENER, MTZJ 6.8B	A
J	402	8A-KC7-620-010	JACK, DIN 13 P SKDS1302	A
L	401	87-003-102-080	COIL, 10UH	A
L	402	87-003-102-080	COIL, 10UH	A
Q	403	87-A30-283-040	C-TR, DTA114YKA	A
Q	404	87-A30-287-040	C-TR, DTC114TKA	A
Q	401	87-010-553-040	CAP, E 47-16 GAS	A
C	454	87-010-196-080	CHIP CAPACITOR, 0.1-25	A
C	452	87-012-358-080	C-CAP, S 0.47-10 F Z	A
C	453	87-012-358-080	C-CAP, S 0.47-10 F Z	A
C	451	87-012-358-080	C-CAP, S 0.47-10 F Z	A
D	401	87-020-331-080	CHIP-DIODE, DAN202K	A
D	451	87-A40-250-080	C-DIODE, DAN217	A
JW	29	88-100-000-080	JUMPER WIRE, PLATING	A
Q	401	87-A30-283-040	C-TR, DTA114YKA	A
Q	402	87-A30-287-040	C-TR, DTC114TKA	A
Q	451	89-324-122-080	TR, 2SC2412K	A
Q	851	87-A30-287-040	C-TR, DTC114TKA	A
Q	852	89-113-625-080	TR, 2SA1362GR (120MHZ, 0.	A
		8A-KC7-611-010	F-CABLE, 3P (AUX)	A
C	953	87-010-176-080	C-CAP, S 680P-50 SL	A
C	956	87-010-194-080	CAP, CHIP 0.047	A
C	955	87-010-194-080	CAP, CHIP 0.047	A
C	954	87-010-194-080	CAP, CHIP 0.047	A
C	959	87-010-197-080	CAP, CHIP 0.01 DM	A
C	958	87-010-197-080	CAP, CHIP 0.01 DM	A
C	952	87-012-358-080	C-CAP, S 0.47-10 F Z	A
C	957	87-012-358-080	C-CAP, S 0.47-10 F Z	A
C	951	87-012-358-080	C-CAP, S 0.47-10 F Z	A
C	960	87-010-194-080	CAP, CHIP 0.047	A
CON	951	88-KTA-602-010	CONN, 15P CAM-B67	A
D	951	87-A40-817-040	C-ZENER, STZ6.8N	A
D	952	87-A40-817-040	C-ZENER, STZ6.8N	A
D	953	87-A40-817-040	C-ZENER, STZ6.8N	A
IC	952	87-A90-951-010	RCR UNIT, SBX1971-52	A
IC	951	88-KT1-608-010	C-IC, LC75854W	A
J	951	85-HRL-623-010	JACK, 3.5 ST BLK	A
L	952	87-005-906-080	C-COIL, S 10.0UHK	A
L	951	87-005-906-080	C-COIL, S 10.0UHK	A
L	953	87-005-906-080	C-COIL, S 10.0UHK	A
LCD	951	8A-KC3-610-010	LCD, AKC-3/4 (2COLOR)	A
LCD	951	8A-KC3-611-010	LCD, AKC-3/4 (NO COLOR)	A
LED	952	87-017-827-070	C-LED, SEC 1201C RED	A
LED	951	87-017-827-070	C-LED, SEC 1201C RED	A
LED	953	87-017-827-070	C-LED, SEC 1201C RED	A
LED	954	87-A40-813-040	C-LED, SEC1E01C BLUE	A
LED	955	87-A40-813-040	C-LED, SEC1E01C BLUE	A
LED	956	87-A40-813-040	C-LED, SEC1E01C BLUE	A

ELECTRICAL MAIN PARTS LIST - 4 / 4

LED	958	87-A40-814-080	LED, SEL2E10C BLUE
LED	959	87-A40-814-080	LED, SEL2E10C BLUE
PL	951	8Z-KT1-641-010	LAMP, T-3	A.....
PL	952	8Z-KT1-641-010	LAMP, T-3	A.....
Q	951	87-A30-287-040	C-TR, DTC114TKA	A.....
Q	952	89-324-122-080	TR, 2SC2412K	A.....
S	957	87-036-251-080	SW, T CT 6X3.5 160	A.....
S	955	87-036-251-080	SW, T CT 6X3.5 160	A.....
S	952	87-036-251-080	SW, T CT 6X3.5 160	A.....
S	951	87-036-251-080	SW, T CT 6X3.5 160	A.....
S	953	87-036-251-080	SW, T CT 6X3.5 160	A.....
S	956	87-036-251-080	SW, T CT 6X3.5 160	A.....
S	959	87-A90-001-080	C-SW, TACT SKQMAL	A.....
S	958	87-A90-001-080	C-SW, TACT SKQMAL	A.....
S	954	87-A90-001-080	C-SW, TACT SKQMAL	A.....
S	963	87-036-251-080	SW, T CT 6X3.5 160	A.....
S	964	87-036-251-080	SW, T CT 6X3.5 160	A.....
S	965	87-036-251-080	SW, T CT 6X3.5 160	A.....
S	962	87-036-251-080	SW, T CT 6X3.5 160	A.....
S	961	87-036-251-080	SW, T CT 6X3.5 160	A.....
S	966	87-036-251-080	SW, T CT 6X3.5 160	A.....
S	960	87-A90-001-080	C-SW, TACT SKQMAL	A.....
S	967	87-A91-597-010	SW, RTRY SIM-026MT	A.....

MECHANICAL PARTS LIST - 1 / 1

NOTE: The characters in the suffix column indicate the part usage.

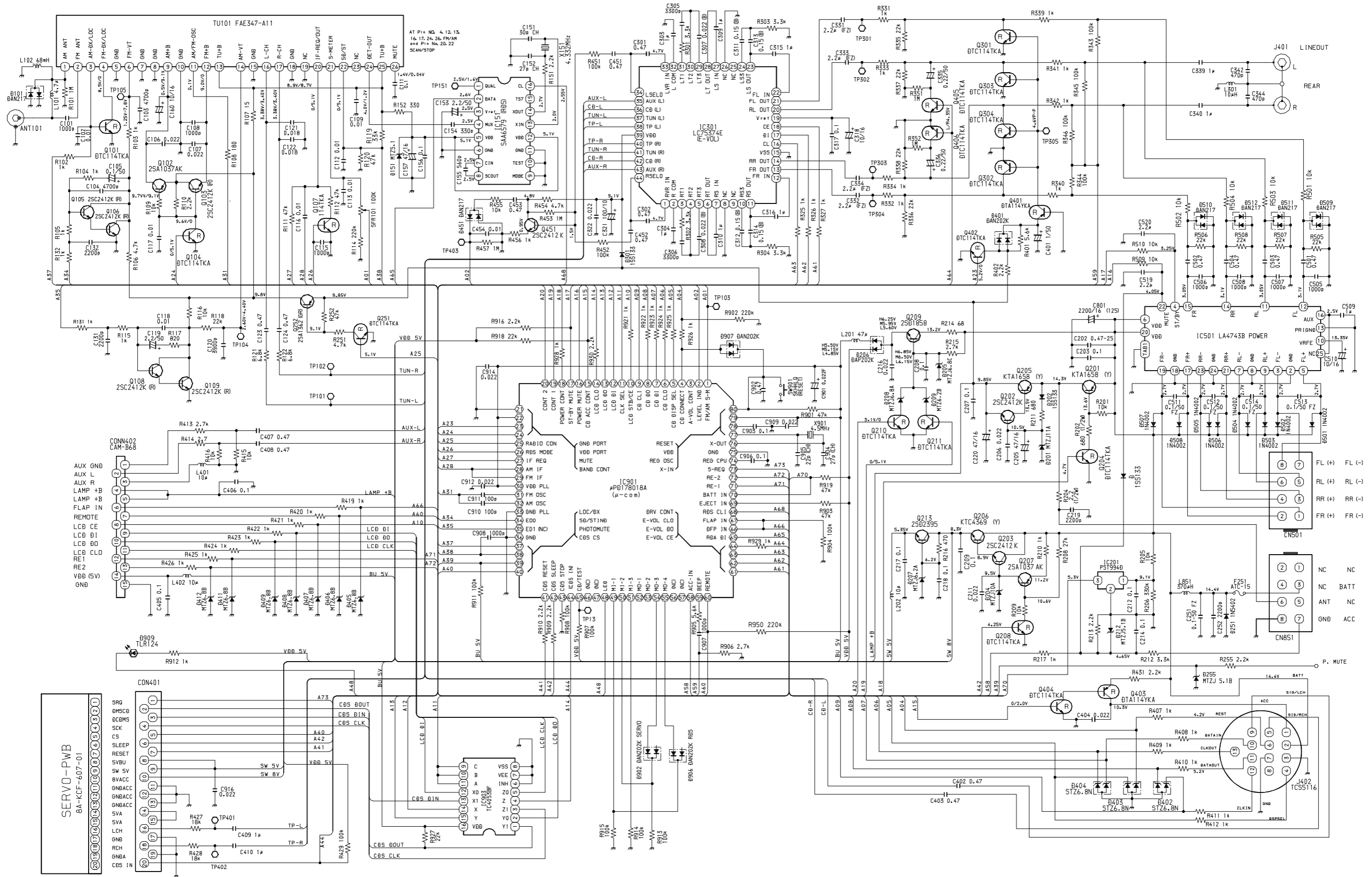
REF.NO	PARTS NO.	NO.	DESCRIPTION	SUFFIX
MYZSTF	XX	A
		KANRI		
8A-KC3-001-010			WINDOW,LCD R507M	A
8A-KC3-002-010			WINDOW,LCD RV607M	A
8A-KCF-001-010			CABI,FRONT -AC15	A
8A-KCF-002-010			CABI,REAR -AC15	A
8A-KCF-020-010			CABI,TRIM -AC15	A
8A-KCF-021-010			WINDOW,SIDE L -AC15	A
8A-KCF-022-010			WINDOW,SIDE R -AC15	A
8Z-KC2-011-210			CABI,BASE -C2	A
8A-KC1-002-010			BTN,TA-AC	A
8A-KC3-011-010			BTN,AF -AC3	A
8A-KC7-005-010			KNOB,RTRY -AC	A
8A-KC7-006-010			BTN,PRE. -AC	A
8A-KC7-007-010			BTN,SEESAW R -AC	A
8A-KC7-011-010			BTN,CLEAR L -AC	A
8A-KC7-014-010			BTN,CLEAR S -AC	A
8A-KC7-020-010			RING,RTRY -AC	A
8A-KCF-007-010			BTN,SEESAW L -AC15	A
8A-KCF-010-010			BTN,CLEAR S2 -AC15	A
8A-KCF-011-010			BTN,DETACH -AC15	A
8A-KCF-012-010			BTN,CLEAR EJ -AC15	A
88-KC4-641-010			FF-CABLE, 20P 1.0 90MM	A
88-ZG5-317-010			S-SCREW,8ZG5S+2-4 W/O	A
8A-KC7-255-010			SPR-C,WIRE	A
8A-KC3-211-010			CASE,LCD LENS -AC3	A
8A-KC3-212-010			LENS,LCD -AC3	A
8A-KC7-208-010			HLDR,BTN L-AC	A
8A-KC7-220-010			SPR-C,ROTARY -AC	A
8A-KC7-224-010			HLDR,P-IC -AC	A
8A-KC7-230-010			HLDR,TR2 -AC	A
8A-KCF-208-010			HLDR,BTN R1 -AC15	A
8A-KCF-210-010			HLDR,BTN R3 -AC15	A
8A-KCF-211-010			LENS,ENCO -AC15	A
8A-KCF-212-010			LENS,R -AC15	A
8A-KCF-213-010			LENS,LCD -AC15	A
8A-KCF-214-010			CASE,LCD LENS -AC15	A
8A-KCF-215-110			HLDR,LCD -AC15	A
8A-KCF-230-010			COVER, DUST DFP LOWRAL	A
8Z-KC1-211-010			COVER, TOP -C	A
8Z-KC1-213-010			CHAS,SIDE L -C	A
8Z-KC1-214-010			CHAS,SIDE R -C	A
8Z-KC1-216-310			HLDR,DECK CDC-01	A
8Z-KC1-236-010			COVER, CONN.BLIND -C	A
8Z-KC1-256-010			COVER, BOTTOM RDS	A
8Z-KC2-201-210			CHAS,FRONT -C2	A
8Z-KC2-203-210			LEVER,DFP HOOK -C2	A
8Z-KC2-204-210			LEVER,DFP LOCK -C2	A
8Z-KC2-221-110			SPR-C,DETACH HOOK-C2	A
8Z-KC2-222-010			SPR-T,DETACH LOCK-C2	A
8Z-KC2-223-010			SPR-C,DETACH -C2	A
8Z-KT1-236-010			CAP,LAMP BLU	A
* 8A-KC7-231-010			HLDR,ISO-WIRE 2 -AC	A
87-251-073-410			SCREW,U+2.6-6	A
87-251-100-410			U+3-16	A
87-432-903-010			WASHER,WTE 2.6	A
87-B10-216-010			U+2.6-4.0 ZINC BLK (BH M2.6)	A
87-B10-259-010			UT2+3.0-10.0 W/O SLOT (BH TAP)	A
8Z-KC1-251-010			S-SCREW,TH2.6-4.0-0.8	A
8Z-KC1-253-010			S-SCREW,PT 2*8 BH+ BLK	A
8A-KT1-631-010			CONN ASSY,8P ISO-BLACK-A	A
8A-KT1-632-010			CONN ASSY,8P ISO-WHITE-A	A
8A-KC7-611-010			F-CABLE,3P (AUX)	A

ACCESSORIES / PACKAGE LIST - 1 / 1

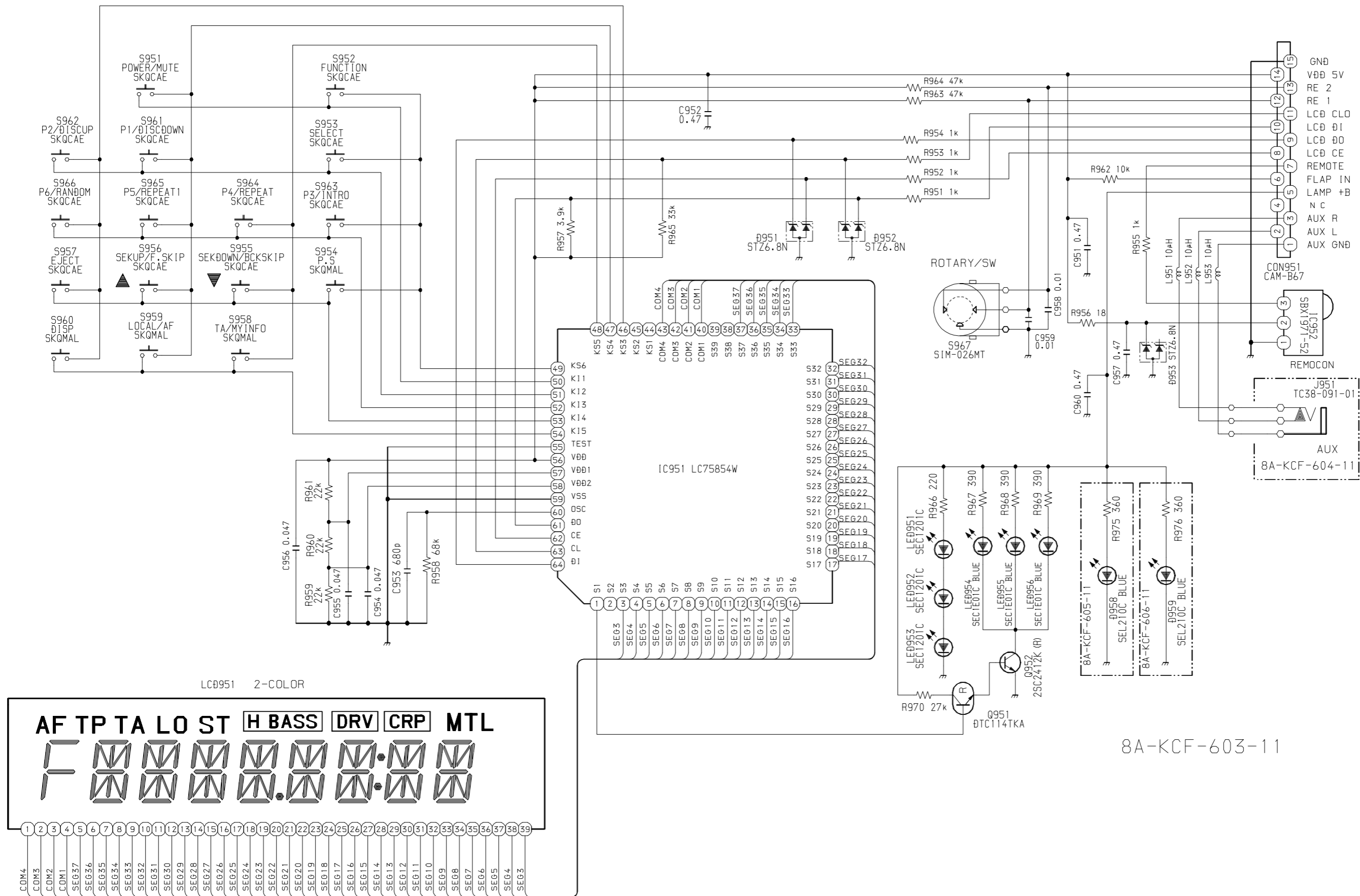
NOTE: The characters in the suffix column indicate the part usage.

REF.NO	PARTS NO.	NO.	DESCRIPTION	SUFFIX
MYZSTF		XX		A
		KANRI		
8A-KC3-901-010			IB, YZ (9L) R507M, RV607M	A
8A-KCG-905-010			IB, INST, YZ (9L) - I	A
87-B10-141-010			NUT, 5 TYPE-2	A
87-B10-143-010			UT1+5-15 W/O SLOT	A
87-B10-144-010			W, 5.2-10-0.5	A
87-B10-145-010			W-SPR, 5.3-8.5-1.5	A
87-B10-216-010			U+2.6-4.0 ZINC BLK (BH M2.6)	A
8Z-KC1-030-010			CASE, DFP -C	A
8Z-KC1-231-110			HLDR, HALF -C	A
8Z-KC1-232-010			KEY, REMOVE -C	A
8Z-KC1-235-010			HLDR, REAR MTG	A
8Z-KC1-244-010			S-SCREW, 5*6 TH+ TAPPING ST	A
8Z-KC1-250-010			S-SCREW, HEXAGON	A

SCHEMATIC DIAGRAM - 1 (MAIN)



SCHEMATIC DIAGRAM - 2 (FRONT)



10/9 BSP機時VRレベル変化
9/21 規定期間変更 LCD, KEY, LED 點亮に

8A KCF 602 11

アイワ株式会社 〒110-8710 東京都台東区池之端1-2-11 ☎03(3827)3111 (代表)
AIWA CO.,LTD. 2-11, IKENOHATA 1-CHOME, TAITO-KU, TOKYO 110, JAPAN TEL:03 (3827) 3111